



# GMT MONTHLY MEMBERSHIP PROGRESS REPORT

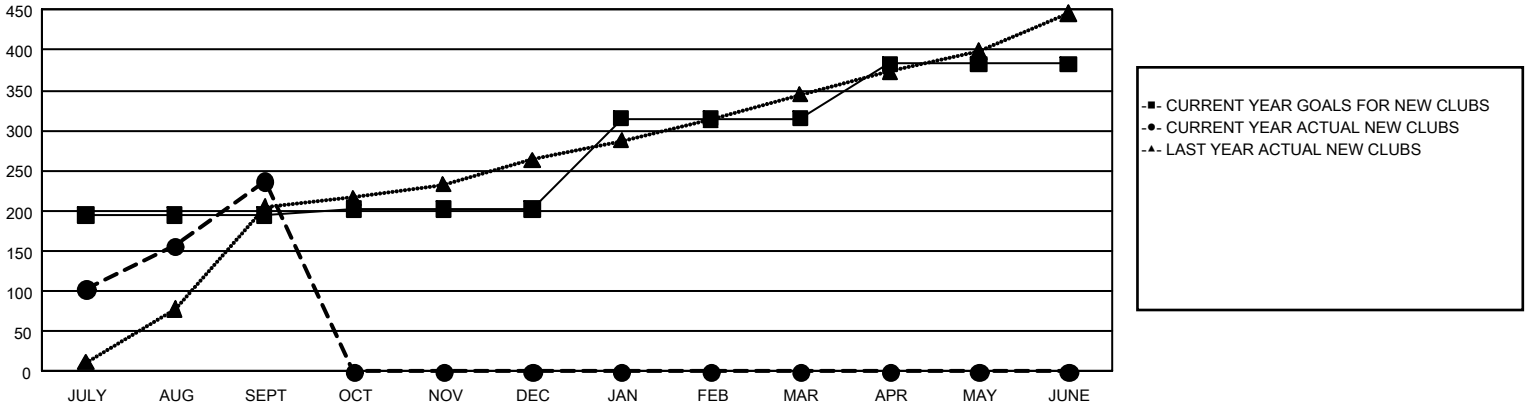
## GAT Constitutional Area 6 - South Asia and Middle East

Results as of: 9/30/2024

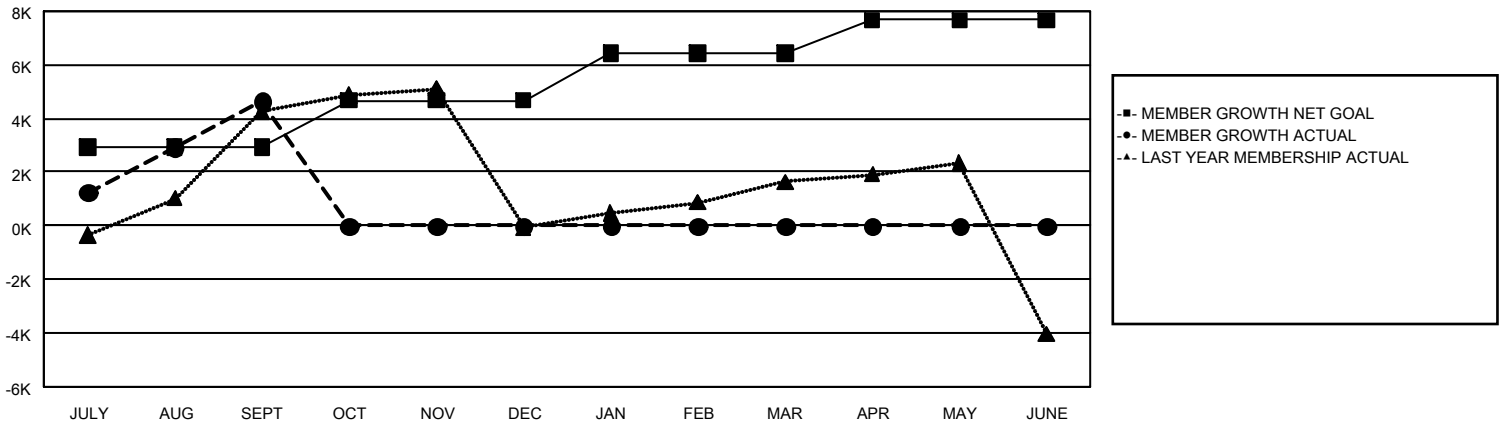
REPORT DOES NOT INCLUDE CLUBS IN UNDISTRICTED AREAS.

Clubs				Members			
RESULTS FOR 2024-2025				RESULTS FOR 2024-2025			
QUARTER	NEW CLUB GOAL	NEW CLUBS	DROPPED CLUBS	QUARTER	MEMBER GROWTH NET GOAL	MEMBER GROWTH ACTUAL	DROPPED MEMBERS ACTUAL (including transfers)
JULY/AUG/SEPT	195	237	57	JULY/AUG/SEPT	2,933	9,801	3,934
OCT/NOV/DEC	7	0	0	OCT/NOV/DEC	1,737	0	0
JAN/FEB/MAR	113	0	0	JAN/FEB/MAR	1,772	0	0
APR/MAY/JUNE	68	0	0	APR/MAY/JUNE	1,228	0	0

**GOALS AND ACTUAL NEW CLUBS CUMULATIVE**



**GOALS AND ACTUAL MEMBERS CUMULATIVE**



DROPPED CLUBS: 57	1,286 CLUBS OF 4,057 ADDED 1 OR MORE NEW MEMBERS	<b>GENDER DISTRIBUTION</b> MALE 67,631 (71.70%) FEMALE 26,661 (28.27%)
<b>DROPPED MEMBERS</b>	<a href="#">CLICK HERE FOR CUMULATIVE MEMBERSHIP DATA</a>	TOTAL FAMILY UNIT MEMBERS 0
DECEASED 30		FAMILY MEMBERS PAYING HALF DUES 0
CLUB CANCELLED 760		
OTHER 3,115		
<b>TOTAL 3,905</b>		